



Fire & Smoke Dampers

Fire & Smoke Dampers

防火排煙閘門



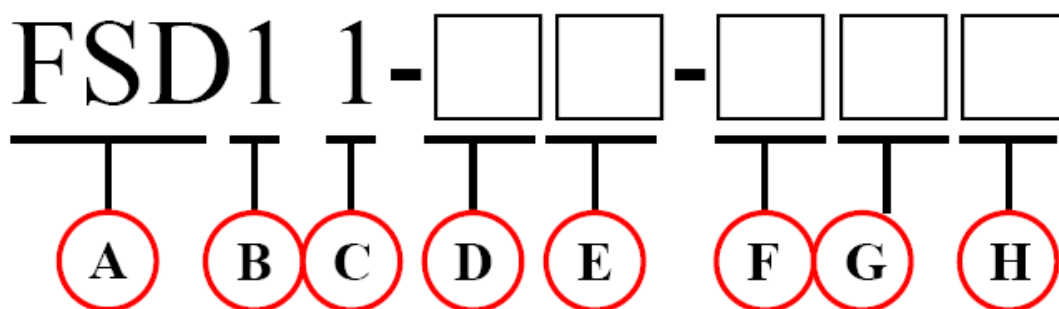
陽鼎實業股份有限公司
FLOWTECH CO., LTD.



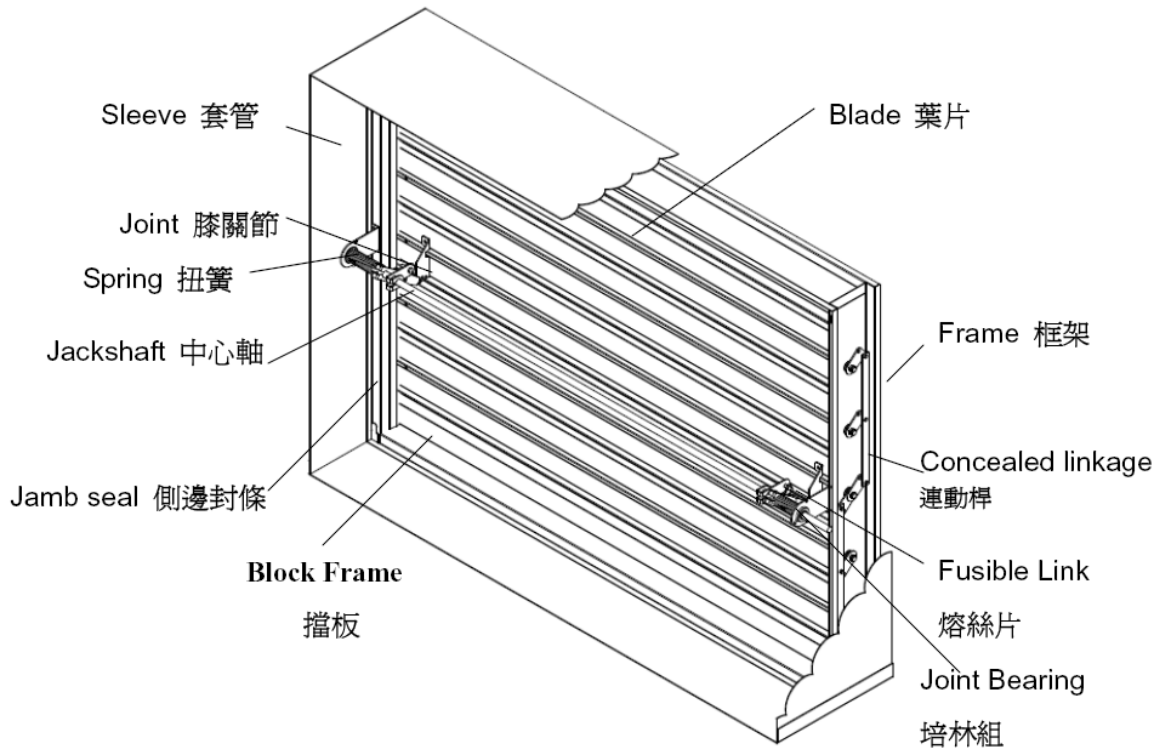
Application and design 應用與設計

The **FSD11** Fire & Smoke Dampers employs triple-V blades and hat channel frame for point-of origin control of fire and smoke in static and dynamic smoke management systems. The Maximum Velocity Rating is 2000 ft/min (10.2 m/s), the Static Pressure Rating is 6 in-Wg (1.5 kPa) in the duct, the Fire Resistance Rating is 3 hr, and the air leakage is Class I level. It may be used for the fire wall, dividing wall (the brick wall or the gypsum board) and the floor with the vertical mounting.

FSD11 排煙防火風門使用 3V 形式的葉片與帽槽型框架用於靜態型式及動態型式之防火煙控系統，**FSD11** 適用環境最大風速 2,000 fpm (10.2 m/s)、最大壓力 6 in-w.g. (1.5 kPa)、防火時效 3 小時、洩漏等級 Class I，可垂直安裝在防火牆、分間牆區劃隔間(磚牆或石膏板牆)，亦可安裝於樓地板間之應用。



A. Product Type		F. Max Velocity (For UL Recognize)	
FSD	Fire & Smoke Damper	1	10.2 m/s (2000 fpm)
B. Blade Type		2	15.2 m/s (3000 fpm)
0	None	3	20.2 m/s (4000 fpm)
1	Triple Vee Blade	G. Max Pressure (For UL Recognize)	
C. Air Leakage		A.	0.5 kPa (2 in-Wg)
1	Class I	B.	1.0 kPa (4 in-Wg)
2	Class II	C.	1.5 kPa (6 in-Wg)
3	Class III	H. Temperature (For UL Recognize)	
D. Fire Rating (For UL Recognize)		A	74 °C (165°F) Operating
0	None	B	100 °C (212°F) Operating
E. Mounting (For UL Recognize)		C	121 °C (250°F) Operating
V	Vertical	D	141 °C (285°F) Operating
H	Horizontal	E	177 °C (350°F) Operating



Standard construction

Frame: 5" x 1" (123mm x 23mm) galvanized steel hat channel with interlocking corner gusset.

Blades: 6" x 16 gauge (153mm x 1.6mm) galvanized steel – triple – V.

Side-Plate: 12" x 16 gauge (300mm x 1.6mm) galvanized steel.

Jackshaft: 1/2" (12.7mm) diameter plated steel hex.

Linkage: Concealed in frame.

Bearings: Bronze or stainless steel oilite, sleeve-type.

Spring: Stainless steel.

Seals: Silicone blade edge seals and flexible metal mount.

Minimum Size: 12" x 12" (305mm x 305mm)

Maximum Size 48" x 48" (1220mm x 1220mm)

Multiple Size 96" x 96" (2440mm x 2440mm)

標準結構

外框：採鍍鋅鋼材的帽型溝槽，結合方式採嵌入式結合。

葉片：6"x16 (153mm x 1.6mm) 葉片形式採 3V 型。

單邊側板：12"x16 (300mm x 1.6mm) 鍍鋅鋼板。

中心軸：Ø1/2" (12.7mm) 鍍鋅圓軸。

連接桿：隱藏於框架內。

軸承：材質為青銅或不鏽鋼。

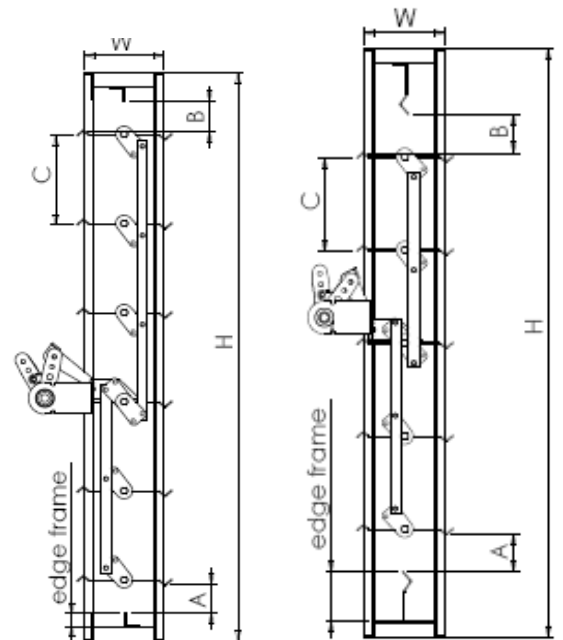
扭簧：材質為不銹鋼。

氣密：使用矽膠材質氣密條固定於葉片邊上並採彈簧片於葉片側邊與外框密合。

最小尺寸：12" x 12" (305mm x 305mm)

最大尺寸：48" x 48" (1220mm x 1220mm)

最大組合尺寸：96" x 96" (2440mm x 2440mm)

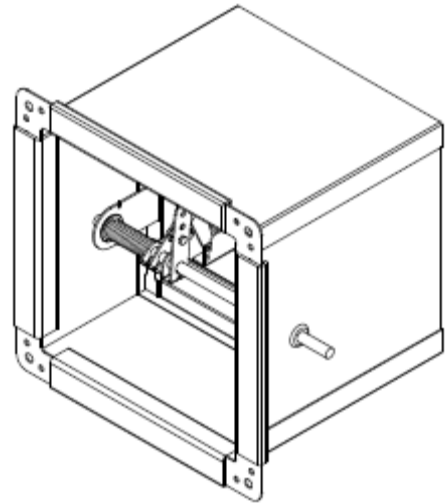


Type 1 $\leq 914\text{mm} \times 914\text{mm}$

Type 2 $> 914\text{mm} \times 914\text{mm}$

Options

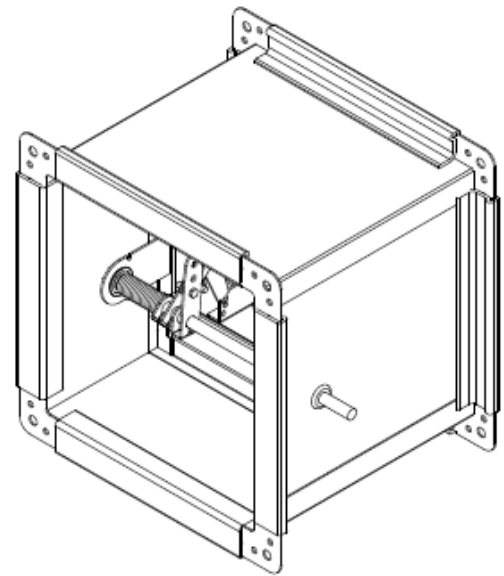
- Alternate actuator
 - 24 VDC 110 VAC 220 V AC
 - 7 N-m 13 N-m 20 N-m Other _____
- Factory installed sleeve:
 - Gauge: 18# (1.2mm) 16# (1.6mm)
 - Length: 12"(305mm) 16"(406mm)
- Factory installed:
 - Side plate (Standard) Flange
 - Double Flange Sleeve



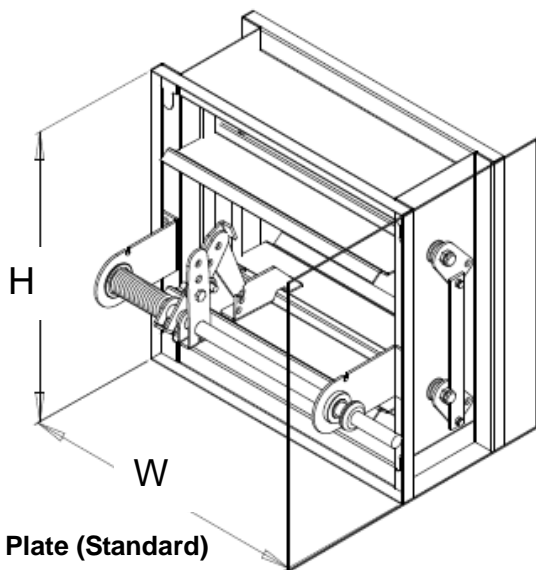
Flange (optional)

可供選擇

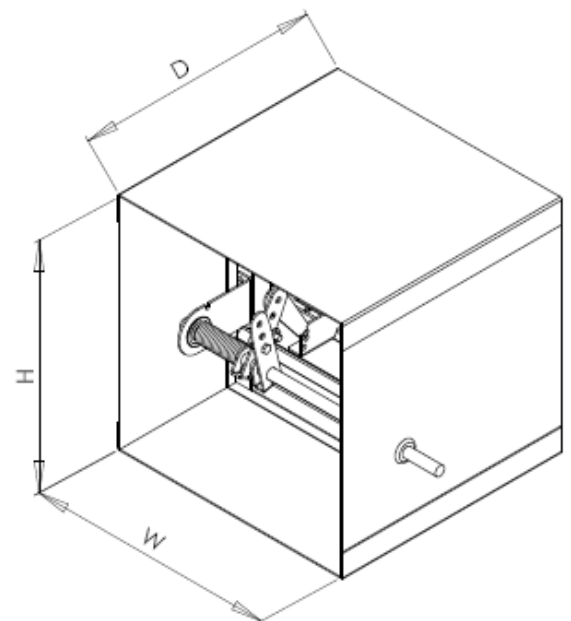
- 驅動器
 - 24 VDC 110 VAC 220 VAC
 - 7 N-m 13N-m 20N-m 其他 _____
- 選擇安裝的套筒規格:
 - 板厚 18# (1.2mm) 16# (1.6mm)
 - 深度 12"(300mm) 其他 _____
- 安裝樣式選擇:
 - 單邊側板 (標準型) 法蘭
 - 雙法蘭 套管



Double Flange (optional)



Side Plate (Standard)



Sleeve (optional)



■TAIPEI 台北總公司

19F-5, No. 1, Pao-Sheng Rd., Yuan-Ho City, Taipei, Taiwan, R.O.C

台北縣永和市保生路 1 號 19 樓之 5

Tel : +886 2-2232-8066 Fax : +886 2-2231-0285~6

E-mail : ydc28066@ms8.hinet.net , flow.tech@msa.hinet.net

■Lab 實驗室

NO.102 Neihu 1st Rd, Dongshan Township, Yilan County 26944, Taiwan(R.O.C)

269 宜蘭縣冬山鄉得安村內湖 1 路 102 號

Tel: FaX:

■Factory 冬山廠

No.658, Meilin Rd., De-an Village, Dongshan Shiang , Yilan County 269, Taiwan, R.O.C

269 宜蘭縣冬山鄉得安村梅林路 658 號

Tel:+886 3-9612 449 Fax:+886 3-9615-843

CNo. : FSD11 September 2009

AGENT (經銷商):